

## Mini Hot Spot Phantom™

Model ECT/HOT/MP/

## Mini Hot Spot Insert™

Model ECT/HOT-MP/I

### Main Applications

- Small animal system evaluation (with field-of-view greater than 77 mm)
- Evaluation of ultra-high resolution ECT systems (less than or equal to 3 mm FWHM)
- Spatial resolution measurements
- Evaluation of center-of-rotation error
- Research

### Specifications

All clear material: PMMA

Diameters of hollow channels: 1.2, 1.6, 2.4, 3.2, 4.0, and 4.8 mm

Center-to-center spacing of channels: Two times the diameter

Insert height: ~ 34 mm

Insert diameter: ~ 75 mm

Cylinder outside diameter: ~ 83 mm

Cylinder outside height: ~ 76 mm

Cylinder inside diameter: ~ 76 mm

Cylinder inside height: ~ 38 mm

### Shipping

Carton: 10" x 8" x 4"

Weight: 3lbs.



*Mini Hot Spot Phantom™*



*Components of Mini Hot Spot Phantom™*



*Components of Mini Deluxe  
and Hot Spot Phantom™*

## Micro Hot Spot Phantom™

Model ECT/HOT/MPP

## Micro Hot Spot Insert™

Model ECT/HOT-MMP/I

### Specifications

All clear material: PMMA

Diameters of hollow channels: 1.2, 1.6, 2.4, 3.2, 4.0, and 4.8 mm

Center-to-center spacing of channels: Two times the diameter

Insert height: ~ 33 mm

Insert diameter: ~ 43 mm

Cylinder outside diameter: ~ 51 mm

Cylinder outside height: ~ 76 mm

Cylinder inside diameter: ~ 45 mm

Cylinder inside height: ~ 36 mm

### Shipping

Carton: 10" x 8" x 4"

Weight: 3lbs.



*Components of Micro Hot Spot Phantom™*



*Micro Hot Spot Phantom™*

## Ultra-Micro Hot Spot Phantom™

Model ECT/HOT/UMMP

Insert Only: Model ECT/HOT-UMMP/I

### Main Applications

- For use with high spatial resolution SPECT and PET Systems (less than or equal to 76 mm FWHM)
- System resolution test for high contrast structures
- Acceptance testing
- Routine quality, assurance and control 0.162
- System performance evaluation
- Research

### Specifications

All clear material: PMMA

Cylinder overall outside diameter: ~ 35 mm

Cylinder inside diameter: ~ 28 mm

Cylinder inside height: ~ 28 mm

Cylinder outside height: ~ 55 mm

Diameter of Insert: ~ 27 mm

Inside height of channel area: ~ 9.9 mm

Diameter of hollow channels: .75, 1.0, 1.35, 1.7, 2.0, and 2.4 mm

Center-to-center spacing of channels: Two times the diameter

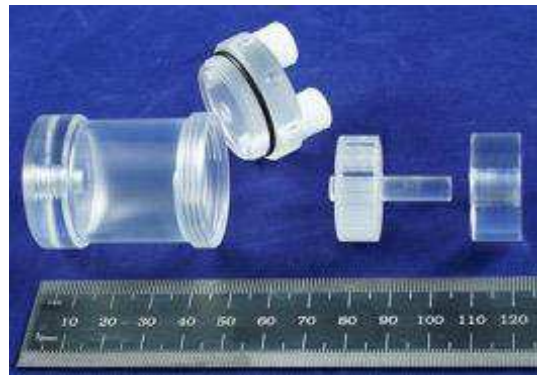
### Shipping

Carton: 10" x 8" x 4"

Weight: 3lbs.



Ultra-Micro Hot Spot Phantom™



Components of Ultra-Micro Hot Spot Phantom™